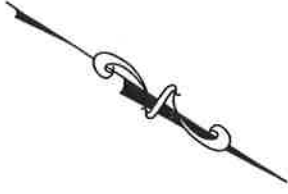


References:

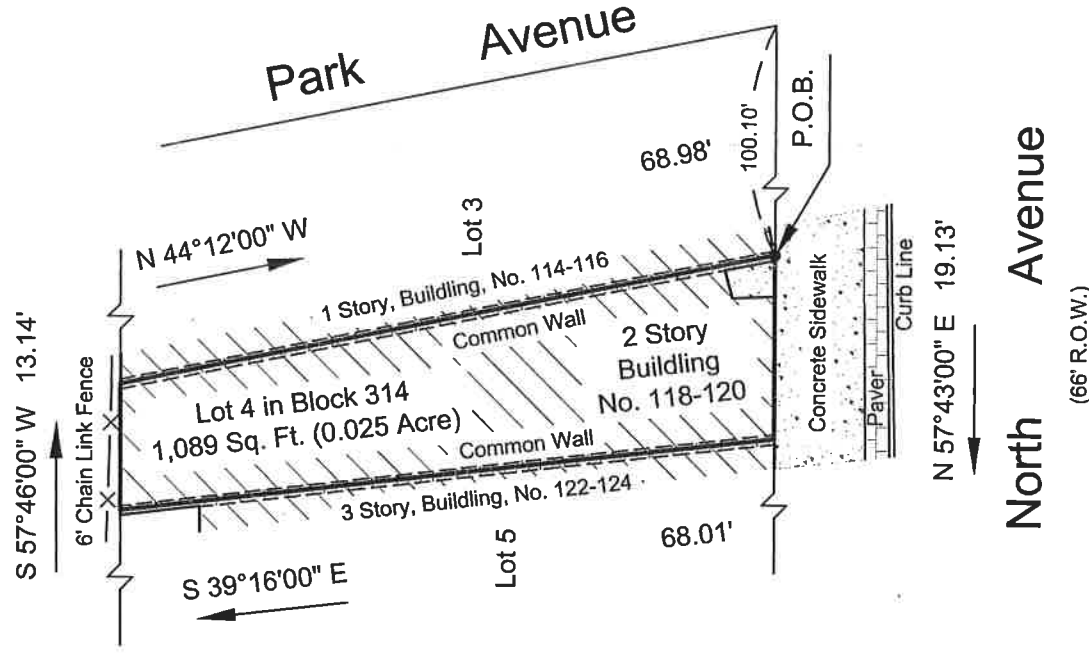
Deed: Book 6309, Page 509.

Tax Map: Being known as 118-120 North Avenue, Lot 4 in Block 314 on the Tax Map of City of Plainfield, Union County, New Jersey.



Conrail (Main Line)

(formerly Central Railroad of New Jersey)
(110' R.O.W.)



Certified to: 118 North Holdings LLC

Notes:

If this document does not contain a raised impression seal of the professional, it is not an authorized original document and may be altered.

A written waiver & direction not to set corner markers has been obtained from the ultimate user pursuant to N.J.A.C. 13:40-5.2

<p>FORMOSA ENGINEERING INC. 168 U.S. Route 1 EDISON, NJ 06817 TEL: (732) 632 8087 FAX: (732) 964 3900 E-mail: awformosaeng@aol.com</p>	
<p>DRAWN BY RAY</p>	<p>PLAN OF SURVEY</p>
<p>APP. A WU</p>	<p>118-120 North Avenue Lot 4 in Block 314 City of Plainfield Union County, New Jersey</p>
<p>SCALE 1"=20'</p>	<p>DATE 1/28/20</p>
<p>PROJ. NO. 03020</p>	<p>ANDREW K. WU P.E. AND P.L.S. PROFESSIONAL ENGINEER AND PROFESSIONAL LAND SURVEYOR NEW JERSEY LICENSE NO. 6834581 <i>Andrew Wu</i> 1/30/2020</p>